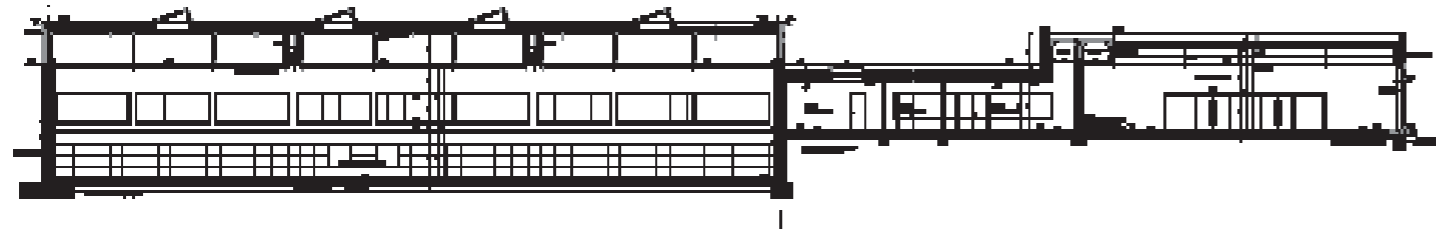


Goethe Gymnasium Regensburg

Dömges Architekten

Location Regensburg, Germany
Completion 2012
Client City of Regensburg
Type of use School
Gross floor area 20,600 m²
Concrete used Monolithic lightweight concrete
Photos Stefan Hanke

The old high school of Regensburg was housed in two buildings to which a new recess hall and a triple court gymnasium were newly added by Dömges Architekten AG. The newly planned use was intended to create a new system for the outdoor areas and create a second entry. The architects developed an overall functional and design concept with clearly discernible utilization zones. The outdoor areas of the recessed ground and the sports court are enclosed by the north-eastern corner of the old school building, while the sports hall closes off the interior area near Uhlandstrasse. The two areas are separated and linked by an "accessible wall" made of monolithic light-weight concrete. It contains the changing rooms and secondary rooms of the recess hall. The building features simple, clear shapes and limited materials.

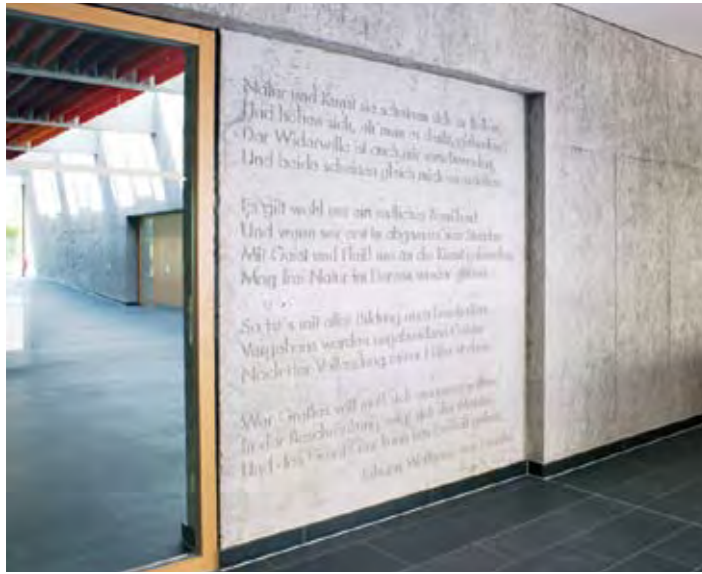


↑ Section sports hall and break hall
↓ Exterior view sports hall



↑ Skylights in the auditorium
↓ Auditorium





↑ Poem of Goethe as relief
↓ Auditorium



↑ Hallway of sports hall
→ Interior view break hall

